

PM45 AND PM65 INDUSTRIAL PRINTERS

Accessories Guide



Honeywell

TABLE OF CONTENTS

- 2 PRINTHEADS**
- 3 CONNECTIVITY**
- 4 MEDIA OPTIONS**
- 5 DOORS**
- 6 RFID**
- 7 CABLES AND CLEANING CARDS**

PRINTHEADS



50180236-001
PM45 Printhead 203 DPI
203 DPI printhead assembly, 4"



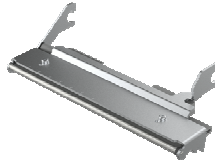
50180237-001
PM45 Printhead 300 DPI
300 DPI printhead assembly, 4"



50180238-001
PM45 Printhead 406 DPI
406 DPI printhead assembly, 4"



50180234-001
PM45 Printhead 600 DPI
600 DPI printhead assembly, 4"

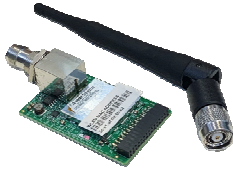


PM65-TPH-203
PM65 Printhead 203 DPI
203 DPI printhead assembly, 6"



PM65-TPH-300
PM65 Printhead 300 DPI
300 DPI printhead assembly, 6"

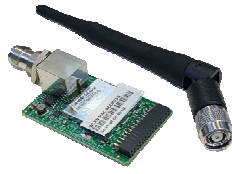
CONNECTIVITY



50178327-001

Kit, PM45 Wireless LAN + Bluetooth, NA

Customer-installable Wi-Fi Kit, includes internal card and antenna. IEEE 802.11 a/b/g/n/ac + V5.0 Bluetooth. Only for USA and Canada



50174832-001

Kit, PM45 Wireless LAN + Bluetooth, ROW

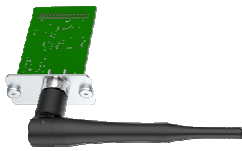
Customer-installable Wi-Fi Kit, includes internal card and antenna, IEEE 802.11 a/b/g/n/ac + V5.0 Bluetooth, For countries outside of USA and Canada



PM65-WL-NA

Kit, PM65 Wireless LAN + Bluetooth, NA

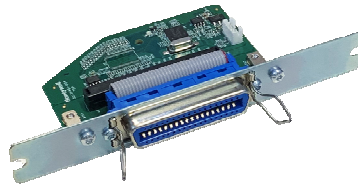
Customer-installable Wi-Fi Kit includes internal card and antenna, IEEE 802.11 a/b/g/n/ac/ax + V5.2 Bluetooth. Only for USA and Canada



PM65-WL-ROW

Kit, PM65 Wireless LAN + Bluetooth, ROW

Customer-installable Wi-Fi Kit includes internal card and antenna, IEEE 802.11 a/b/g/n/ac/ax + V5.2 Bluetooth. For countries outside of USA and Canada.



PM45-PAR-01

Kit, Parallel Port

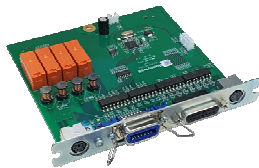
Field-installable, parallel interface (IEEE 1284), for both PM45 and PM65



PM45-IND-01

KIT, Industrial Interface

Field-installable, industrial interface – eight digital in/out, four analog relays, one RS232/422/485 port, for both PM45 and PM65



PM45-APPL-01

KIT, Applicator Interface

Field-installable, applicator interface – Ext Error 8-pin mini-DIN, Z-style standard DB15 port, S-style standard 14-pin Centronics, Ext Power 6-pin mini-DIN, for both PM45 and PM65

MEDIA OPTIONS



50180235-001
Kit, PM45 Platen Roller
Platen Roller Assembly



PM65-PR
Kit, PM65 Platen Roller
Platen Roller Assembly



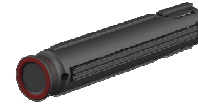
50180192-001
Media Arm Edge Guide
Prevents telescoping of media rolls,
for both PM45 and PM65



203-972-001
3" Media Core
Adapter for 3" diameter media cores,
for both PM45 and PM65



50180221-001
PM45 Collapsible Core
Enables coreless media rewinding,
increases ribbon take-up capacity



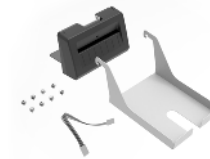
PM65-CC
PM65 Collapsible Core
Enables coreless media rewinding,
increases ribbon take-up capacity



50180196-001
PM45 Label Dispenser
Making it easier to dispense labels with strong
adhesive. Must use together with rewinder.

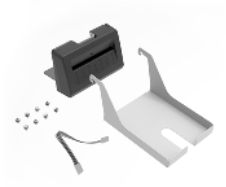


PM65-LD
PM65 Label Dispenser
Making it easier to dispense labels with strong
adhesive. Must use together with rewinder.



50180206-001
PM45 Cutter Kit
Media cutter

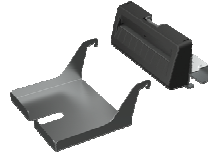
MEDIA OPTIONS



50180201-001

PM45c Cutter Kit

Field-installable, Media Cutter



PM65-CUTTER

PM65 Cutter Kit

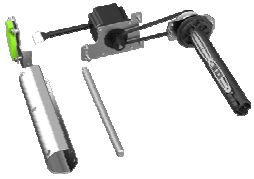
Media Cutter



50178326-001

PM45 Rewinder

Field-installable, Internal Rewinder/Peel Off Kit



PM65-MR-001

PM65 Rewinder

Field-installable, Internal Rewinder/Peel Off Kit

DOORS



PM45C-LD-KIT

PM45c Long Door Kit

Full door, completely covering media up to 5" in diameter



PM45C-SD-KIT

PM45c Short Door Kit

Short door, enabling open access to media

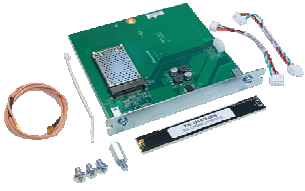


PM45C-MD-KIT

PM45c Mega Door Kit

Dome door, completely covering media rolls up to 8" in diameter

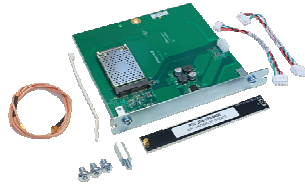
RFID



50180747-001

RFID Kit, NA

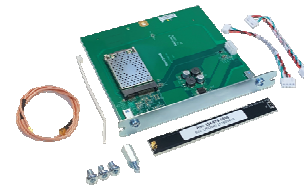
Field-installable, RFID UHF,
North America and Mexico
For both PM45 and PM65



50180233-001

RFID Kit, EU

Field-installable, RFID UHF, Europe
For both PM45 and PM65



3009-1530-001

RFID Kit, CN

Field-installable, RFID UHF, China
For both PM45 and PM65

CABLES



321-576-004

USB Cable

USB (USB-A to USB-B) cable, 6.5 ft. (2 m) length, RoHS compliant. For both PM45 and PM65



1-974024-018

Serial Cable

RS-232 (DB9F to DB9M) cable, 5.9 ft. (1.8 m) length, RoHS compliant. For both PM45 and PM65



1-94022-018

Parallel Cable

Parallel (IEEE 1284) cable, 5.9 ft. (1.8 m) length, RoHS compliant. For both PM45 and PM65

1-974028-025

US power cord

For both PM45 and PM65

1-974027-025

EU power cord

For both PM45 and PM65

1-974029-020

UK power cord

For both PM45 and PM65

321-471-002

AUS power cord

For both PM45 and PM65

32-2497-01

China power cord

For both PM45 and PM65

321-502-002

India power cord

For both PM45 and PM65

321-501-002

Denmark power cord

For both PM45 and PM65

CLEANING CARDS



1-110501-00

Printhead Cleaning Card

Cleaning Card, 4.5"x6", box of 25. For PM45

1-110601-00

Printhead Cleaning Card

Cleaning Card, 6" wide printers, box of 25. For PM65



For more information
automation.honeywell.com

Honeywell Industrial Automation
855 S Mint St
Charlotte, NC 28202
800-582-4263
www.honeywell.com

PM45 PM65 Industrial Printers Accessories Guide | Rev C | 09/24
© 2024 Honeywell International Inc.

Honeywell